

AR (M) 550N

AR (M) 620N

AR (M) 700N

SHARP[®]

INSURANCE SERVICES



Sharp's new AR-M550N/620N/700N Digital IMAGERs™ make it easy to share information—and keep it secure.

With state-of-the-art security features, powerful scanning and storage capabilities, and Sharp's world-famous quality and reliability, Sharp's new AR-M550N/M620N/M700N Digital IMAGERs can change the way you exchange information. Improve claim response times, enhance customer relations, and minimize duplicating costs with advanced functionality that enables you to do more—in dramatically less time.



Innovative Scan² Technology for enhanced productivity

insurance services at a glance

Organizations:

- Commercial Banks and Lenders
- Independent Brokers/Agents
- Real Estate Agencies
- Title Companies
- Mortgage Companies
- Investment Service Organizations
- Auto Dealerships
- Hospitals, Labs, Outpatient Centers
- HMOs, Medical Clinics, Doctors
- Nursing Homes
- Ambulatory Service Companies
- Medical Billing Companies
- Pharmacies

Typical applications:

- Mortgage Applications
- Loan Applications
- Loss Information Reports
- Policy Amendments and Updates
- Claims Forms
- Adjuster Reports
- Retirement Planning Documents
- Fraud Protection
- Account Applications
- Contracts
- Consumer Reporting Forms
- Credit Applications
- HR Materials
- Forecast Reports
- Budget Reports
- Training Materials
- Direct Mail
- Service Brochures
- Newsletters
- Sales and Promotional Materials

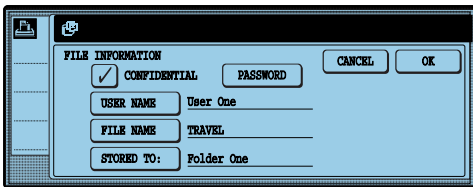
Departments that would benefit:

- Auditing
- Claims
- Benefits
- Underwriting
- Loss Prevention
- Workers Compensation
- Credit Union
- Accounts Payable
- Collections
- Human Resources
- Administration
- Marketing
- Sales

Current legislation impacting the Insurance industry:

HIPAA
Gram-Leach Bliley Act

Digital
IMAGER[™]
Advanced Workgroup System



Comprehensive device and document security

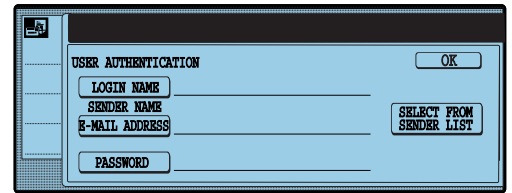


ImageSEND

Effortless document distribution for a streamlined workflow

Ultra-Secure Document and Device Technology

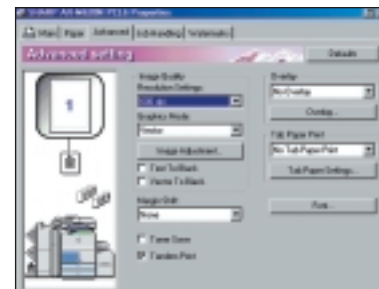
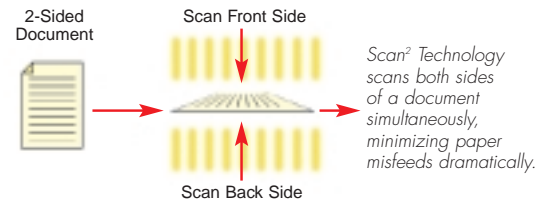
Sharp feature/accessory	benefit
Built-in LDAP Support	Minimizes manual entry of e-mail addresses
User Authentication	Restricts network scan activity by verifying user information with LDAP server
Confidential Print	Protects sensitive documents like health records and disclosure statement by holding them in the queue until a 5-digit PIN code is entered
IP/MAC Address Filtering	Protects device from unauthorized users
Data Security Kit (option)	Provides maximum security with AES 128-bit encryption and overwriting of data up to 7 times without having to remove the hard disk drive
Printer Administration Utility	IT Managers can monitor network printing activity for potential problems, ensuring maximum uptime



Built-in LDAP support with User Authentication minimizes manual entry of e-mail addresses, and restricts user activity on the network with password protection.

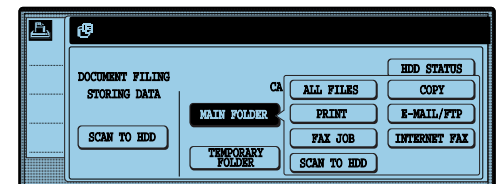
High-Performance Features and Document Finishing

Sharp feature/accessory	benefit
Scan ² Technology	Minimizes paper misfeeds and enhances reliability so your job gets completely quickly
1.50-sheet Duplex Single Pass Feeder	Scans at 65 ipm (images per minute) simplex; 75 ipm duplex providing incredible speed
Saddle-Stitch Finisher, Hole Punch Unit or Post Sheet Inserter (option)	Offers versatile finishing options for lengthy policies, HR materials, investor reports, and sales presentations
Tandem Copying/Printing	Maximize networked printers by printing the same document on 2 IMAGERS for increased speed and efficiency
TIFF and PDF Direct Printing	Increases efficiency and speeds up workflow with simple, drag-and-drop, icon-driven printing
Carbon Copy Print	Reduces costs by enabling users to produce multiple-part forms for loss information forms, adjuster reports and more



Efficient Document Distribution and Management

Sharp feature/accessory	benefit
Standard Document Filing	16 GB storage capacity (up to 20,000 letter size pages) allows for storage of claims forms, applications, adjuster reports, consumer reporting forms, and more
Network scanning with ImageSEND and six scan destinations (option)	Scan and send policy amendments, contracts, claims, adjuster reports and more instantly for increased productivity and reduced mail costs
Integrated Sharpdesk™ software (option)	Allows you to organize, edit and manage property damage reports, auto claims, adjuster reports
Printer Status Monitor	View printer conditions, check paper and toner levels before you send your job for optimum reliability
Seamless, Doc2NET™ compatibility (option)	Store and easily access frequently used documents from a network server including claims forms, adjuster reports, applications, workers comp forms, and more
Super G3 Faxing with PC-Fax driver (option)	Fax documents including budget and forecast reports, claims, and adjuster reports directly from an application for added speed and efficiency



Standard built-in document filing makes it easy to share and store your scanned files.



Sharp is a registered trademark of Sharp Corporation. All other trademarks and registered trademarks are property of their respective holders.

Sharp Electronics Corporation
 Sharp Plaza, Mahwah, NJ 07430-1163
 1-800-BE-SHARP
www.sharppusa.com

SHARP®