

AR M 550N

AR M 620N

AR M 700N

**SHARP**

FINANCIAL SERVICES

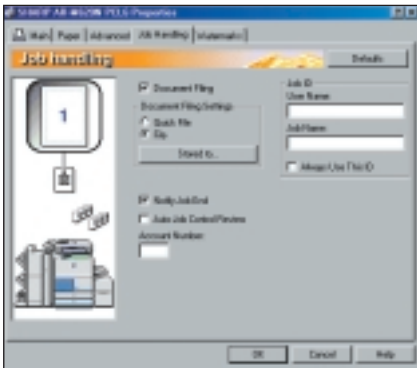


## Dramatically increase productivity and impact your bottom line with Sharp's new Digital IMAGERs™

In the Financial Services sector, Sharp's new AR-M550N/M620N/M700N Digital IMAGERs can change the way you exchange information—providing a significant increase in productivity—and return on investment. Save time and reduce costly outsourcing with versatile, on-the-fly document finishing. Sharp's integrated network scanning allows you to share time-sensitive information electronically in an instant—resulting in greater efficiency, reduced mail costs, and enhanced customer service. And to maintain confidentiality and regulatory compliance, Sharp offers comprehensive document and device security critical to today's financial environments.



*Innovative Scan² Technology for enhanced productivity*



*Comprehensive device and document security*



*Effortless document distribution for a streamlined workflow*

### financial services at a glance

#### Organizations:

- Commercial Banks and Lenders
- Mortgage Companies
- Title Companies
- Financial Advisors
- Insurance Companies
- Tax Preparation Companies
- Credit Agencies
- Securities Firms
- Investment Service Organizations

#### Typical applications:

- Audit Reports
- Profit/Loss Statements
- Forecast Reports
- Budget Reports
- Amortization Schedules
- Mortgage Applications
- Contracts
- Loan Information Packages
- Stock and Bond Transfers
- Retirement Planning Documents
- Investment Prospectuses
- Tax Forms
- Stock Records and Reports
- Trust Information
- Estate Planning Documents
- HR Materials
- Training Manuals
- Account Applications
- Credit Applications
- Direct Mail
- Service Brochures
- Newsletters
- Sales and Promotional Materials

#### Departments that would benefit:

- Accounting
- Accounts Payable
- Credit
- Collections
- Human Resources
- Benefits
- Administration
- Marketing
- Sales
- Customer Service

#### Current legislation impacting the Financial Services sector:

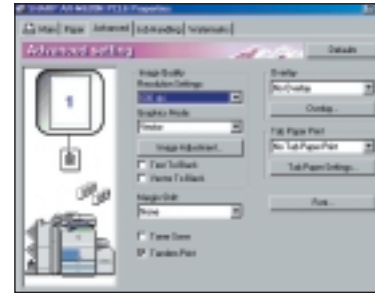
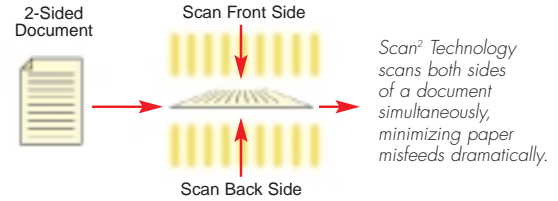
- Gramm-Leach-Bliley Act
- Sarbanes-Oxley Act

**Digital IMAGER™**  
Advanced Workgroup System



## High-Performance Features and Document Finishing

Sharp feature/accessory	benefit
Scan <sup>2</sup> Technology	Minimizes paper misfeeds and enhances reliability so your job gets completely quickly
150-sheet Duplex Single Pass Feeder	Scans at 65 ipm (images per minute) simplex; 75 ipm duplex providing incredible speed
Saddle-Stitch Finisher, Hole Punch Unit or Post Sheet Inserter (option)	Offers versatile finishing options for bound documents like mortgage and loan packages
Account Control Management	Ability to limit each account (up to 500) to a pre-defined limit of copies/prints
Tandem Copying/Printing	Maximize networked printers by printing the same document on 2 IMAGERs for increased speed and efficiency
TIFF and PDF Direct Printing	Increases efficiency and speeds up workflow with simple, drag-and-drop, icon-driven printing
3,100-sheet paper capacity (6,600 sheets maximum with optional Large Capacity Tray)	Reduces costs by producing budget reports, loan information packages and more in-house



The Tandem Print option can double your productivity during peak print periods—like tax season.

## Ultra-Secure Document and Device Technology

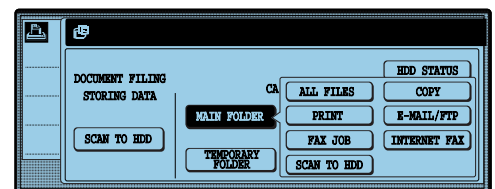
Sharp feature/accessory	benefit
Built-in LDAP Support	Minimizes manual entry of e-mail addresses
User Authentication	Restricts network scan activity by verifying user information with LDAP server
Confidential Print	Protects sensitive documents like credit reports, pension plans, and profit/loss statements by holding them in the queue until a 5-digit PIN code is entered
IP/MAC Address Filtering	Protects device from unauthorized users
Data Security Kit (option)	Provides maximum security with AES 128-bit encryption and overwriting of data up to 7 times without having to remove the hard disk drive
File Size Limitation	IT managers can limit the size of files from 1 MB to 10 MB to minimize network traffic



IP/MAC Address Filtering on the IMAGER Home Page protects networked devices from unauthorized users.

## Efficient Document Distribution and Management

Sharp feature/accessory	benefit
Standard Document Filing	16 GB storage capacity (up to 20,000 letter size pages) allows for storage of mortgage applications, amortization schedules, stock and bond transfers, and more
Network scanning with ImageSEND and six scan destinations (option)	Scan and send loan information packages, bankruptcy documents, contracts, forecast reports, and more instantly for increased productivity and reduced mail costs
Integrated Sharpdesk™ software (option)	Allows you to organize, edit and manage scanned files for maximum productivity
Printer Status Monitor	View printer conditions, check paper and toner levels before you send your job for optimum reliability
Seamless, Doc2NET™ compatibility (option)	Store and easily access frequently used documents from a network server including credit and loan applications, financial reporting forms, tax documents
Super G3 Faxing with PC-Fax driver (option)	Fax documents including contracts, estate planning documents, and credit reports directly from an application for increased efficiency



Standard built-in document filing makes it easy to share and store your scanned files.



With Sharpdesk you can edit, combine and manage scanned files for greater efficiency.

Sharp is a registered trademark of Sharp Corporation. All other trademarks and registered trademarks are property of their respective holders.

Sharp Electronics Corporation  
 Sharp Plaza, Mahwah, NJ 07430-1163  
 1-800-BE-SHARP  
[www.sharppusa.com](http://www.sharppusa.com)

**SHARP**